

State of Wyoming Corner Record

(in compliance with the CORNER PERPETUATION AND FILING ACT, Wyoming Statutes, 1997, Section 33-29-140, et. seq. and the Rules and Regulations of the Board of Registration for Professional Engineers and Professional Land Surveyors)

Reverse side of this form may be used if more space is needed.

Record of original survey and citation of source of historical information (if corner is lost or obliterated). Description of corner monumentation evidence found and/or monument and accessories established to perpetuate the location of this corner. Sketch of relative location of monument, accessories, and reference points with course and distance to adjacent corner(s) (if determined in this survey). Method and rationale for reestablishment of lost or obliterated corner.

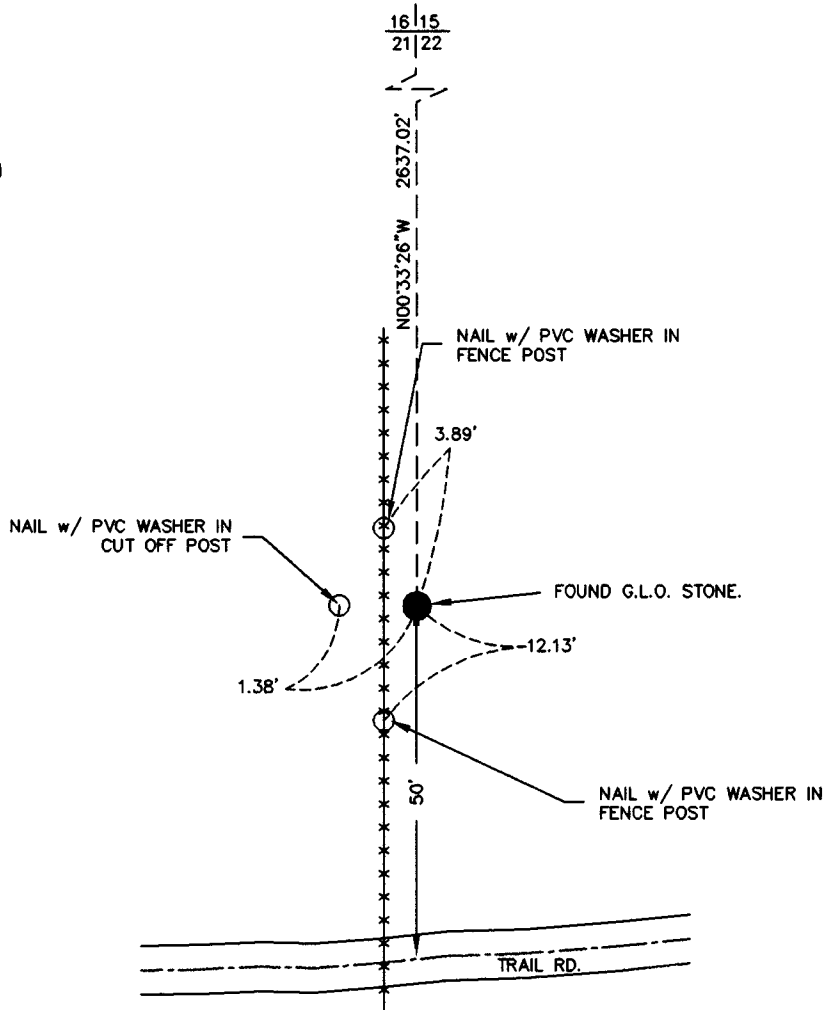
FOUND: FOUND ORIGINAL G.L.O. STONE IN GOOD CONDITION WITH 1/4 CHISELED ON WEST FACE. ON THE EAST SIDE OF A N-S FENCE LINE. REFERENCED AS SHOWN.

G.L.O. RECORD: GRANITE STONE 15" x 11" x 10"
MEASURED 10" x 6" x 12" (ABOVE GROUND)

SET: NOTHING

RECORDED 12/31/2003 AT 1:40 PM REC# 375052 BK# 1784 PG# 1255
DEBRA K. LATHROP, CLERK OF LARAMIE COUNTY, WY PAGE 1 OF 1

REFERENCES: SET AS SHOWN



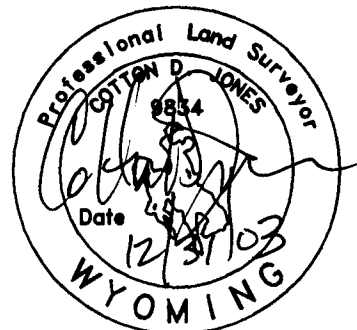
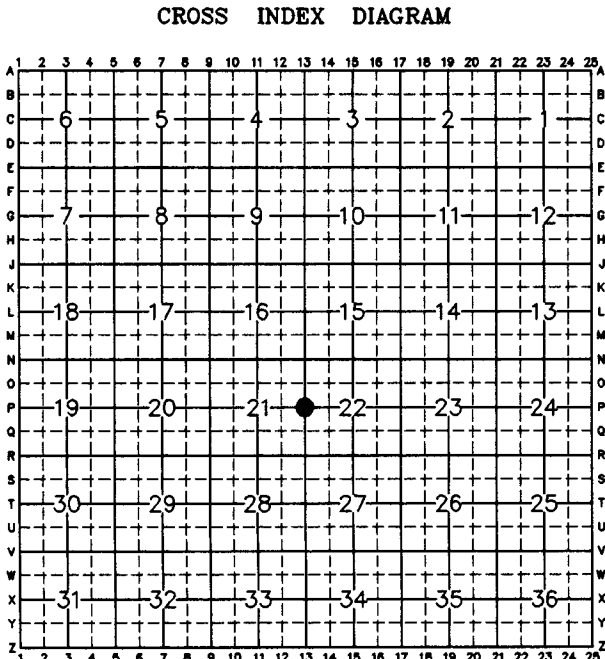
Date of Field Work: 12-03 Office Reference: 2-2389.03

Firm/Agency, Address

Cotton D. Jones, P.L.S.
A.V.I., p.c.
2035 Westland Road
Cheyenne, WY 82001
Telephone Number: (307) 637-6017

This corner record was prepared by me or under my direction and supervision.

SEAL & SIGNATURE



Corner Name: 1/4 CORNER Section: 21|22 T.14N R.69W; 6th P.M. Cross-Index No.: P-13
SBRPEPLS/PLSW: March 1994